

Software Design Description  
Version 1.1  
December 8, 2003

Web Accessible Alumni Database

Michael J. Reaves

Submitted in partial fulfillment  
Of the requirements of  
Masters Studio Project

# Table of Contents

<b>Table of Contents</b> .....	ii
<b>Table of Figures</b> .....	iii
<b>1.0. Introduction</b> .....	1
1.1. Purpose .....	1
1.2. Scope .....	1
1.3. Glossary .....	1
1.4. References .....	2
1.5. Overview of document .....	2
<b>2.0. Deployment diagram</b> .....	4
<b>3.0. Architecture design</b> .....	4
3.1. Web System Architecture .....	4
Alumni Home Page .....	4
Survey .....	5
Entries .....	6
Search/E-mail an Alum .....	7
Alumni Database .....	8
<b>4.0. Data structure design</b> .....	11
4.1. Data field types and sizes .....	11
<b>5.0. Use case realizations</b> .....	12
Use Case: Survey .....	12
Use Case: Add Entry .....	13
Use Case: Update Entry .....	14
Use Case: Search/E-mail Alum .....	14
<b>6.0. Interface design</b> .....	15
Figure 23 Return used instead of Submit .....	22
<b>7.0. Help system design</b> .....	23
<b>8.0. Index</b> .....	24

## Table of Figures

Figure 1 Deployment Diagram .....	4
Figure 2 Architecture Design.....	4
Figure 3 System Sequence Diagram .....	12
Figure 4 Survey Sequence Diagram.....	12
Figure 5 Entries Sequence Diagram.....	13
Figure 6 Add Entry Sequence Diagram.....	13
Figure 7 Update Entry Sequence Diagram .....	14
Figure 8 Search/E-mail Sequence Diagram.....	14
Figure 9 Home page .....	15
Figure 10 Entries page.....	16
Figure 11 New Alum form page .....	16
Figure 12 Recorded added page.....	17
Figure 13 Get year page.....	17
Figure 14 Get Alum page .....	18
Figure 15 Get password page.....	18
Figure 16 Data retrieved page.....	19
Figure 17 Data to update page .....	19
Figure 18 Record updated page .....	20
Figure 19 No year alert.....	20
Figure 20 Return used instead of Submit .....	21
Figure 21 Incorrect year page .....	21
Figure 22 Incorrect password page .....	22
Figure 23 Return used instead of Submit .....	22

## 1.0. Introduction

### 1.1. Purpose

This Software Design Document provides the design details of Jacksonville State University Computing and Information Sciences Web Accessible Alumni Database (CISWAAD).

The expected audience is Jacksonville State University Computing and Information Sciences Faculty, including Dr. Martin and studio committee members, the CISWAAD developers, and the people who will maintain the CISWAAD. It will also serve as a reference for Studio students.

### 1.2. Scope

This document contains a complete description of the design of CISWAAD.

The basic architecture is a web server from a client server paradigm. The basic pages will be in HTML and JSP.

The designated faculty member in charge of the CISWAAD will have full access to make changes, as he/she deems necessary. The changes could include, but not limited to, changing the survey questions, data collected on each Alum, and the ability for one Alum to e-mail another Alum.

### 1.3. Glossary

Term	Definition
Alum	Graduate of Jacksonville State University Computing and Information Sciences Department
BDE	Borland Database Engine
CI	Configuration Item
CIS	Computing and Information Sciences Department
Html	Hyper text markup language
IEEE	Institute of Electrical and Electronic Engineers

QA	Quality assurance
SCMP	Software Configuration Management Plan
SDD	Software Design Document
SEI	Software Engineering Institute, Pittsburgh, Pa
SQAP	Software Quality Assurance Plan
SRS	Software Requirement Specification
Tbd	To be decided
Tbn	To be named
Web Site	A place on the world wide web

#### **1.4. References**

[IEEE] The applicable IEEE standards are published in “IEEE Standards Collection,” 2001 edition.

[Bruade] The principal source of textbook material is “Software Engineering: An Object-Oriented Perspective” by Eric J. Bruade (Wiley 2001).

Reaves, Michael J. “Software Project Management Plan Jacksonville State University Computing and Information Sciences Web Accessible Alumni Database.” Jacksonville State University, 2003.

Reaves, Michael J. “Software Requirement Specifications Jacksonville State University Computing and Information Sciences Web Accessible Alumni Database.” Jacksonville State University, 2003.

#### **1.5. Overview of document**

The remaining chapters and their contents are listed below.

Section 2 is a Deployment Diagram that shows the physical locations where the system actually exists. This allows a clear explanation of where each design entity will reside. Each part will work in unison to accomplish each requested task.

Section 3 is the Architectural Design that specifies the design entities that collaborate to perform all the functions included in the system. Each of these entities has an Abstract description concerning the services that it provides to the rest of the system. In turn, each

design entity is expanded into a set of lower-level design operations that collaborate to perform its services.

Section 4 concerns the Data Structure Design.

Section 5 contains the Use Case Realizations. Each Use Case stated in the SRS Document can be traced by the given design objects.

Section 6 discusses the User Interface Design, and how it can be created with maximum user efficiency and ease of use.

Section 7 covers the help system.

## 2.0. Deployment diagram

Error! Not a valid link.

Figure 1 Deployment Diagram

The CIS Alumni database is external to the web system. All of the pages for the web site will reside on the departmental server.

## 3.0. Architecture design

### 3.1. Web System Architecture

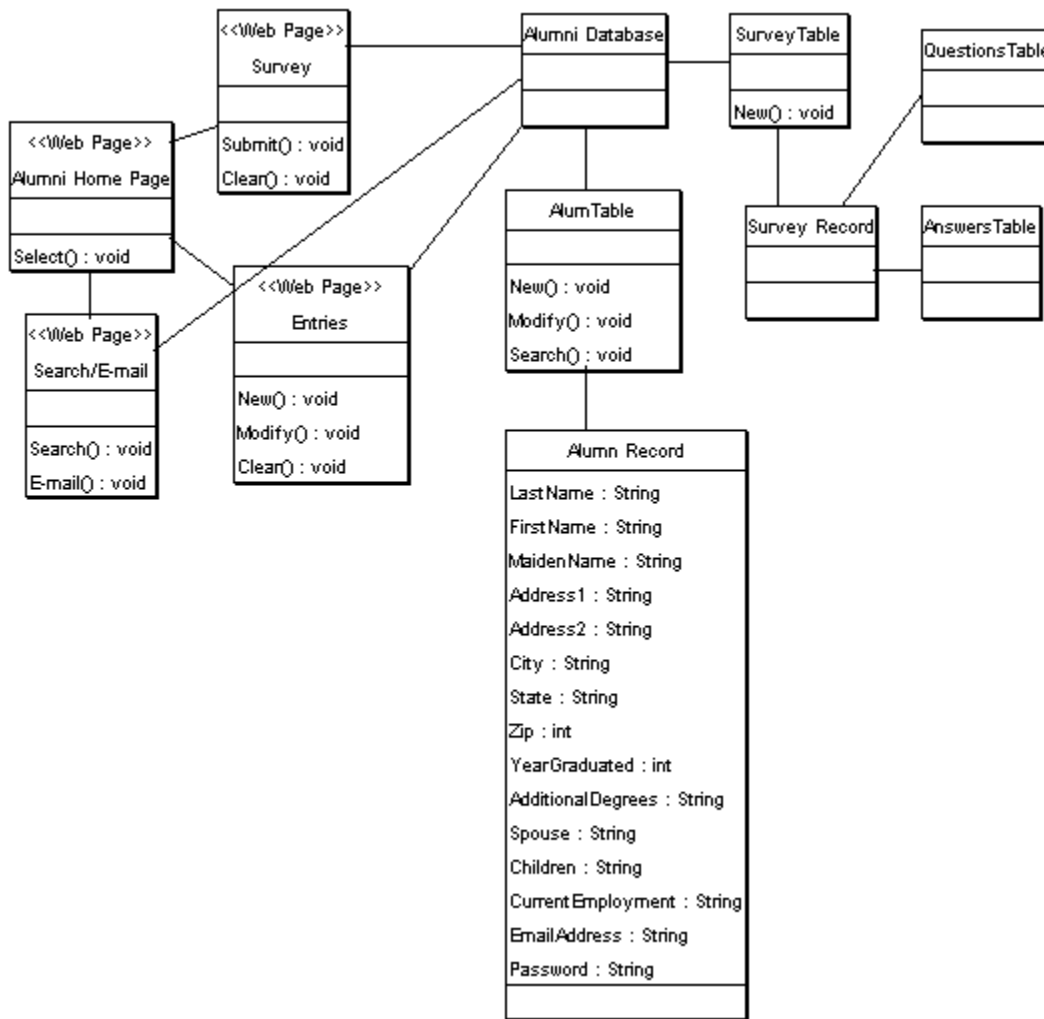


Figure 2 Architecture Design

#### Alumni Home Page

Name: Alumni Home page

Type: Web page

Description: This is the initial home page presented to the Alum upon connection with the Departmental Server. There are three buttons. One to fill out a survey, one to go to the entries page, and one to search/e-mail an Alum.

Attributes: None

Resources: None

Operations:

Name: Select()

Arguments: None

Returns: No return value

Pre-condition: Connected to site

Post-condition: On another page

Exceptions: None

Flow of Events:

1. Alum is presented with the Alumni Home Page.
2. Alum clicks a button
3. Alum is connected to another page

### **Survey**

Name: Survey Page

Type: Web page form

Description: When the Alum clicks the survey button he/she will be presented with a form. The form will have a combination of list boxes and blank fields to be completed. Some fields will be marked as required. When the form is completed the Alum can submit the form or clear the form. If the form is cleared the Alum can then enter information. If the form is submitted the information is saved on the Departmental Server in the Alumni Database.

Attributes: Text

Resources: None

Operations:

Name: Submit()

Arguments: None

Returns: Text file

Pre-condition: Connected to site

Post-condition: Form saved and faculty member e-mailed

Exceptions: None

Flow of Events:

1. Alum is presented with form
2. Alum fills in boxes and selects from list boxes
3. Alum clicks submit
4. Departmental server save data in a text file
5. Departmental server sends an e-mail to designated faculty member

Name: Clear()

Arguments: None

Returns: No return value

Pre-condition: Connected to site

Post-condition: Form is cleared



Exceptions: None

Flow of Events:

1. Alum is presented with form
2. Alum fills in boxes and selects from list boxes
3. Alum clicks clear
4. Alum is presented with empty form

### **Entries**

Name: Entries

Type: Web page

Description: This page has two links, one to add a new entry and one to update the Alum's entry.

On the Add New Entry page the Alum is presented with a form to be completed. Once the Alum has completed the form the Alum can then either submit or clear the form. When the form is submitted the Departmental Server will check to ensure that the required fields are not blank. If the required fields are blank the Departmental Server will return a message stating a required field is blank. If all required fields are not blank the Departmental Server will create a new record in the Alum Table in the Alumni Database.

On the Update Information page the Alum will be presented with a drop down box list of years of graduation. The Alum chooses one of those years and clicks submit. The Departmental Server will return a list of all Alums from that year. The Alum will check his/her name and click submit. The Departmental Server will present a form requesting the Alum's password. The Departmental Server will check the password against the password stored in the Alum's record in the Alumni Database. If the passwords match the Departmental Server will return all of the data in that Alum's record in a form with a message to update whatever information they wish and click submit or click cancel to make no changes. If the passwords do not match, the Departmental Server will return a message to contact the faculty member in charge of the Alumni Database to receive their password.

Attributes: None

Resources: None

Operations: New

Name: Submit()

Arguments: None

Returns: None

Pre-condition: Connected to site

Post-condition: New entry in Alumni database created

Exceptions: None

Flow of Events:

1. Alum is on the Add Entry form
2. Alum completes the empty boxes and chooses from list boxes.
3. Alum clicks submit.
4. Departmental server add the new entry to the Alumni Database
5. Alum is returned to the Alum Home Page

Name: Clear()

Arguments: None

Returns: None  
 Pre-condition: Connected to site  
 Post-condition: Form is cleared  
 Exceptions: None

Flow of Events:

1. Alum is presented with form
2. Alum fills in boxes and selects from list boxes
3. Alum clicks clear
4. Alum is presented with empty form

Operations: Modify entry

Name: Submit()

Arguments: None  
 Returns: None  
 Pre-condition: Connected to site  
 Post-condition: Year selected is sent to the Departmental server  
 Exceptions: None

Flow of Events:

1. The Alum is on the Update Entry Page
2. The Alum is presented with a form that has a list box of years of graduation.
3. The Alum chooses a year.
4. The Alum clicks submit.
5. The Departmental server returns a list of all graduates in the Alumni Database that graduated that year.

Name: Cancel()

Arguments: None  
 Returns: None  
 Pre-condition: Connected to site  
 Post-condition: Form is cleared and Alum is returned to the Alumni Home Page  
 Exceptions: None

Flow of Events:

1. The Alum is on the Update Entry Page form
2. The Alum fills in the fields he/she want to change
3. The Alum clicks cancel
4. The form is cleared and the Alum is returned to the Alumni Home Page

### **Search/E-mail an Alum**

Name: Search/E-mail an Alum

Type: Web page

Description: The Alum is on the search/e-mail page. The Alum is presented with a list box of graduation date. The Alum chooses a date and clicks submit. The Departmental server queries the Alumni Database for all Alums that graduated that year. The Departmental server presents the Alum with a list of graduates. If the Alum that the requesting Alum is searching for is listed, the Alum will check the box next to his/her name and click submit. The Departmental server will retrieve the non-sensitive information about the requested Alum and present it to the Alum. The Alum can then

either search for another Alum, e-mail that Alum if that Alum will accept e-mail, or return to the Alumni Home Page. If the Alum chooses to e-mail the Alum, the Department server will present the Alum with a box for the e-mail. The Alum then fills in the message to send and click send. The Departmental server will e-mail the message to the Alum with the sending Alum's name and return the Alum to the search/e-mail page.

Operations:

Name: Submit()

Arguments: None

Returns: None

Pre-condition: Connected to site

Post-condition: Year/name is sent to the Departmental server

Exceptions: None

Flow of Events:

1. The Alum is on the search/e-mail page.
2. The Alum chooses a year/name from the list box
3. The Alum clicks submit.
4. The Departmental server queries the Alumni Database for the information
5. If the information is present, the Departmental server will present it to the Alum.

Name: Cancel()

Arguments: None

Returns: None

Pre-condition: Connected to site

Post-condition: Form is cleared and Alum is returned to the Alumni Home Page

Exceptions: None

Flow of Events:

1. The Alum is on the search/e-mail page
2. The Alum clicks cancel
3. The Departmental server returns the Alum to the Alumni Home Page

Name: Send()

Arguments: None

Returns: None

Pre-condition: Connected to site

Post-condition: The message is e-mailed to the requested Alum and the requesting Alum is returned to the Alumni Home Page

Exceptions: None

Flow of Events:

1. The Alum is on the e-mail page.
2. The Alum types his/her message in the message box.
3. The Alum clicks send.
4. The Departmental server sends the message to the requested Alum and returns the requesting Alum to the search/e-mail page.

### **Alumni Database**

Name: Alumni Database

Type: Database

Descriptions: The Alumni Database will reside on the Departmental server. The Alumni Database will be created and maintained in Access.

Attributes: Last Name: String  
 First Name: String  
 Maiden Name: String  
 Address: String  
 City: String  
 State: String  
 Zip: int  
 Year Graduated: int  
 Additional Degrees: String  
 Spouse: String  
 Children: String  
 Current Employment: String  
 E-mail Address: String  
 Receive e-mails: boolean  
 Password: String

Operations:

Name: New()  
 Arguments: None  
 Returns: None  
 Pre-condition: None  
 Post-condition: A new record is added to the Alumni Database Table  
 Exceptions: None

Flow of Events:

1. The Alum is on the add an entry form page.
2. The Alum fields in the fields
3. The Alum clicks submit
4. The Departmental server adds the new information as a table in the Alumni Database

Name: Replace()

Arguments: None  
 Returns: None  
 Pre-condition: The requested Alum is in the Alumni Database  
 Post-condition: The requested table is replaced with the new table  
 Exceptions: None

Flow of Events:

1. The Alum is on the update entry page
2. The Alum changes the field he/she wants changed
3. The Alum clicks submit
4. The Departmental server overwrites the existing table with the new table

Name: Search()

Arguments: None  
 Returns: Record  
 Pre-condition: None

Post-condition: The Alumni Database has been searched

Exceptions: None

Flow of Events:

1. The Departmental server searches the Alumni Database for a particular record
2. If the record is found the Departmental Server presents the record to the Alum

#### 4.0. Data structure design

The data is stored in a relational database using Access. The relations are described by the database administrator for the CIS. The fields for transmitting to and from the database are given in the following table.

##### 4.1. Data field types and sizes.

Attribute Name	Attribute Type	Attribute Size
LastName*#	String	30
FirstName*#	String	30
MaidenName*#	String	30
Address1*#	String	50
Address2#	String	50
City*#	String	30
State*#	String	2
Zip*#	Int	6
Year*#	Int	4
AdditionalDegrees#	String	50
Spouse#	String	30
Children#	String	50
CurrentEmployment#	String	50
EmailAddress#	String	20
ReceiveEmails#^	Boolean	1
Password*#	String	10
EntireRecordVisible*^	Boolean	1

Fields marked with an ‘\*’ are required fields. Fields marked with a ‘#’ can be visible or not visible and is determined by the Alum. Fields marked with a ‘^’ are never visible to anyone other than the Alum.

### 5.0. Use case realizations

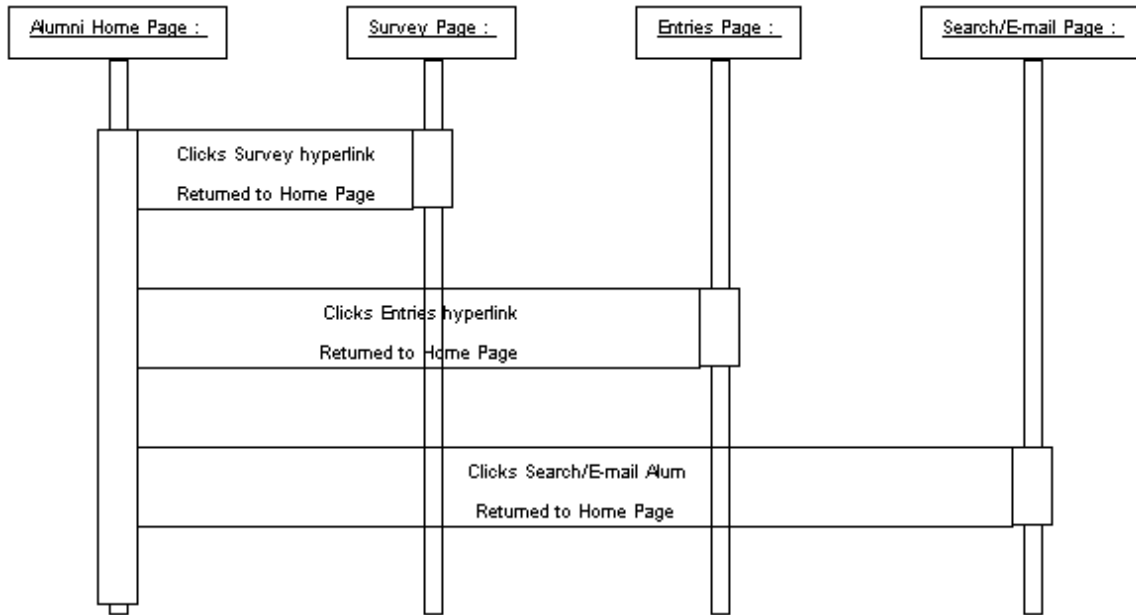


Figure 3 System Sequence Diagram

#### Use Case: Survey

See also Detail Survey in Software Requirement Specifications 3.2.

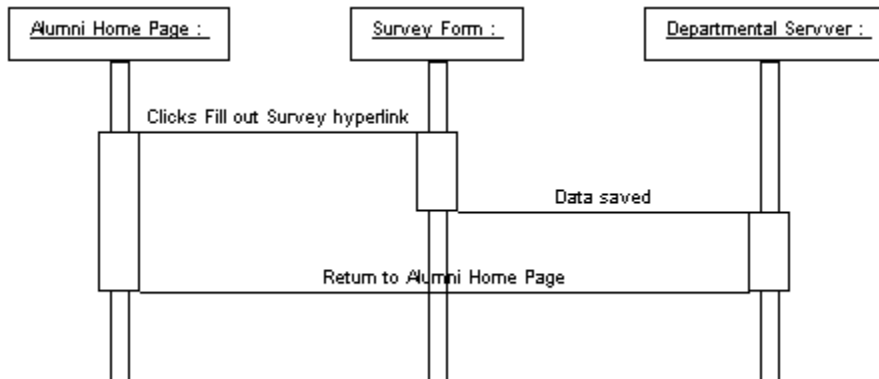
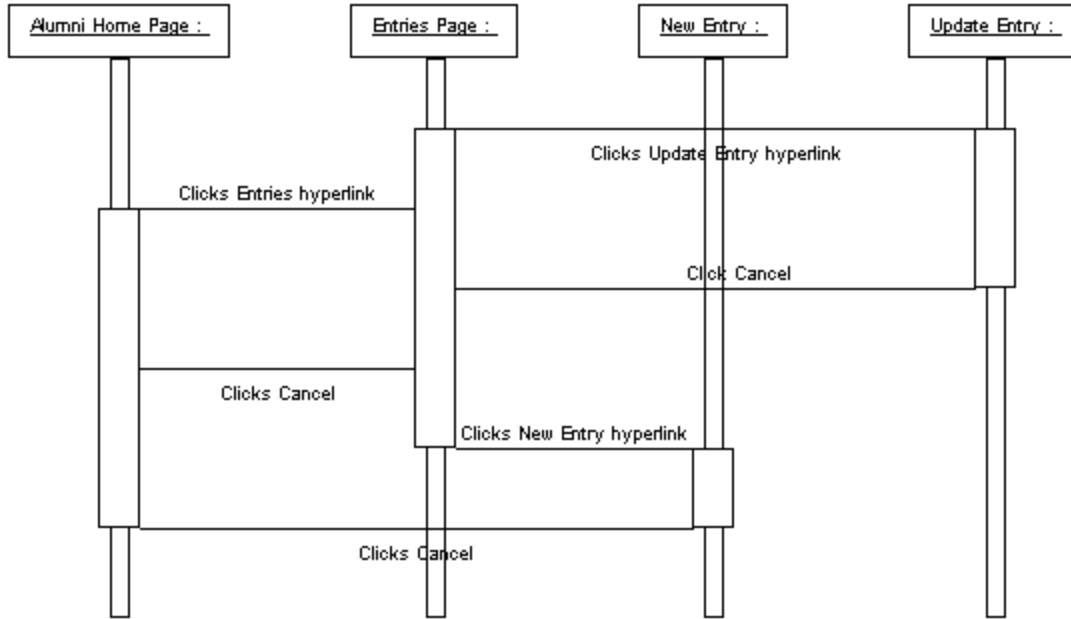


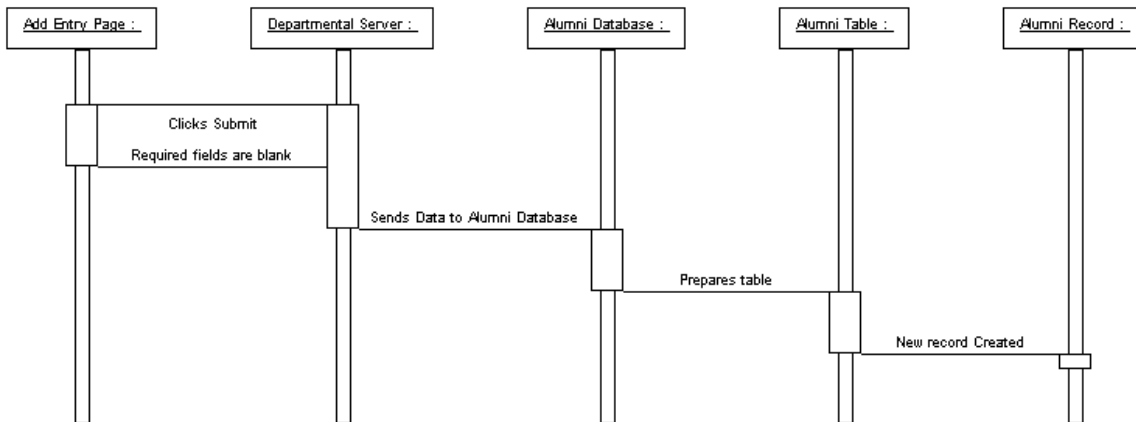
Figure 4 Survey Sequence Diagram



**Figure 5 Entries Sequence Diagram**

**Use Case: Add Entry**

See also Detail Add Entry in Software Requirement Specifications 3.2.



**Figure 6 Add Entry Sequence Diagram**



### Use Case: Update Entry

See also Detail Update Entry in Software Requirement Specifications 3.2.

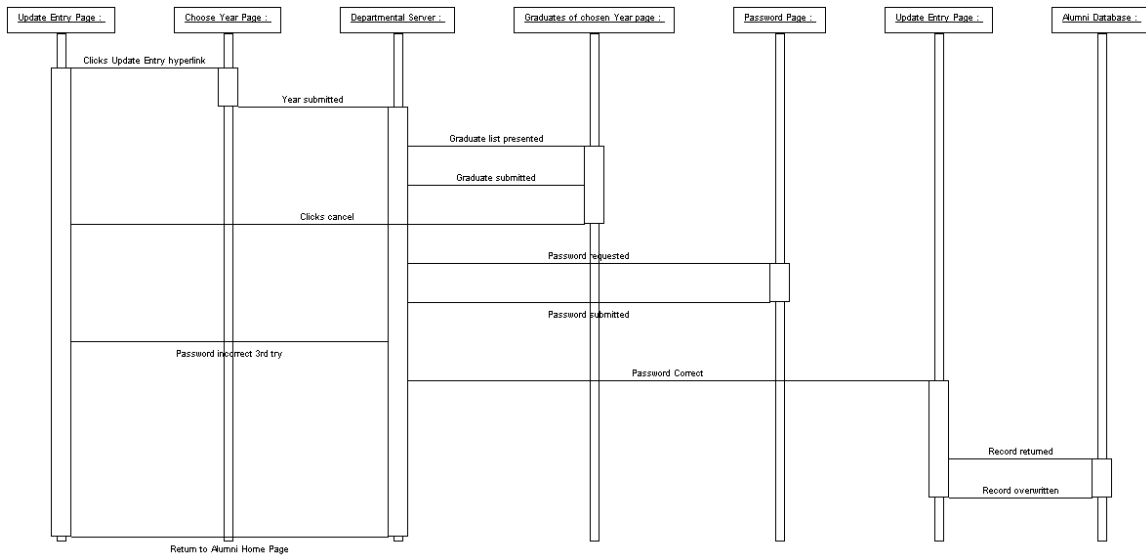


Figure 7 Update Entry Sequence Diagram

### Use Case: Search/E-mail Alum

See also Detail Search/E-mail Alum in Software Requirement Specifications 3.2.

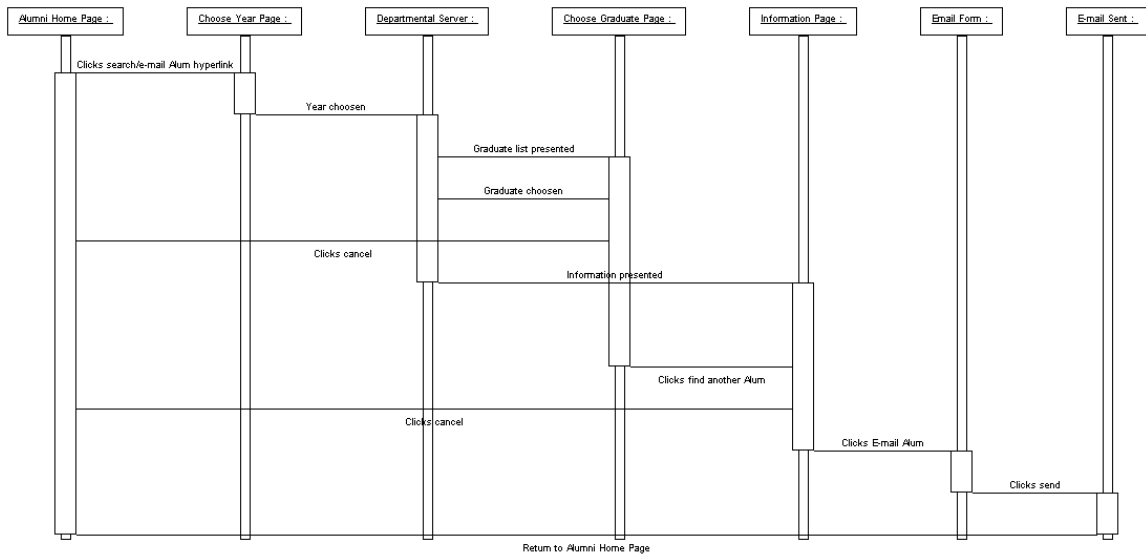


Figure 8 Search/E-mail Sequence Diagram

## 6.0. Interface design

The interface will use the same color and design scheme used on the other Jacksonville University Web pages to create a continuous effect. The exact pages will be placed here in a future version.

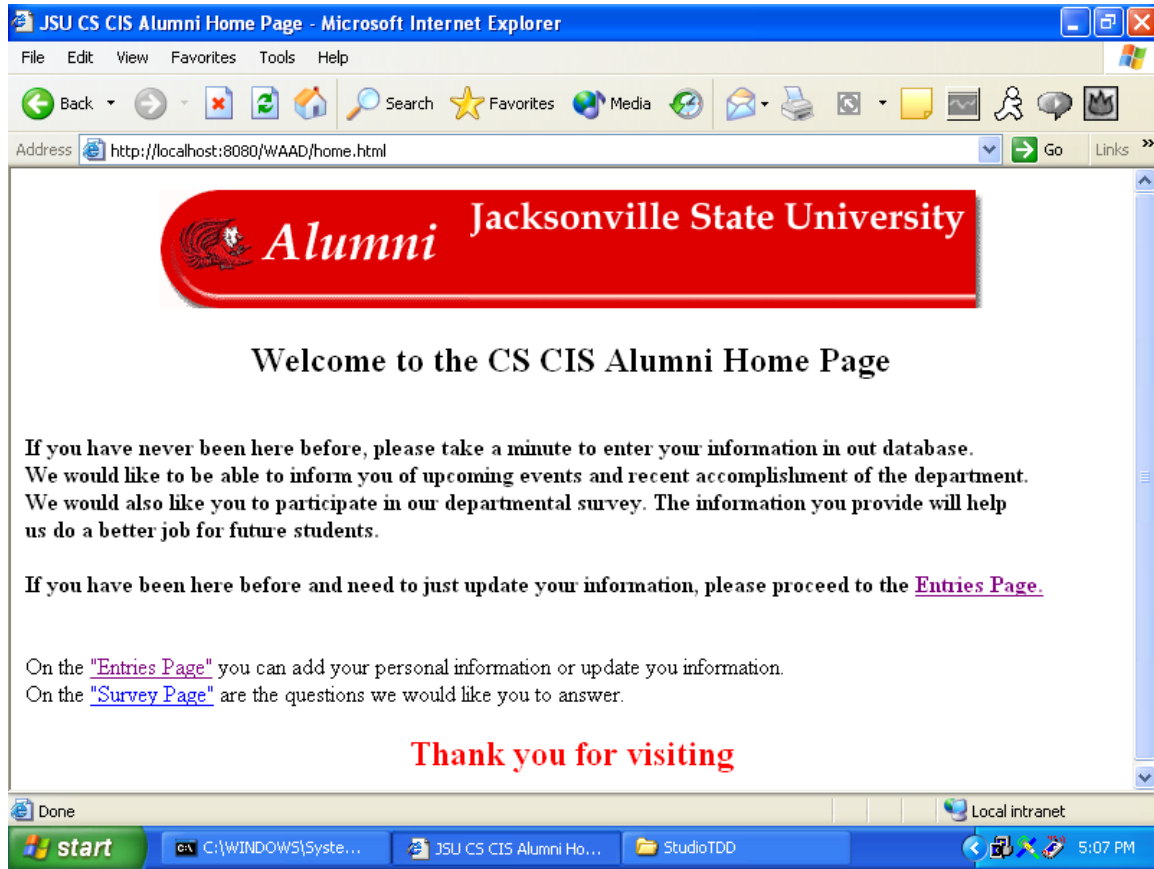


Figure 9 Home page

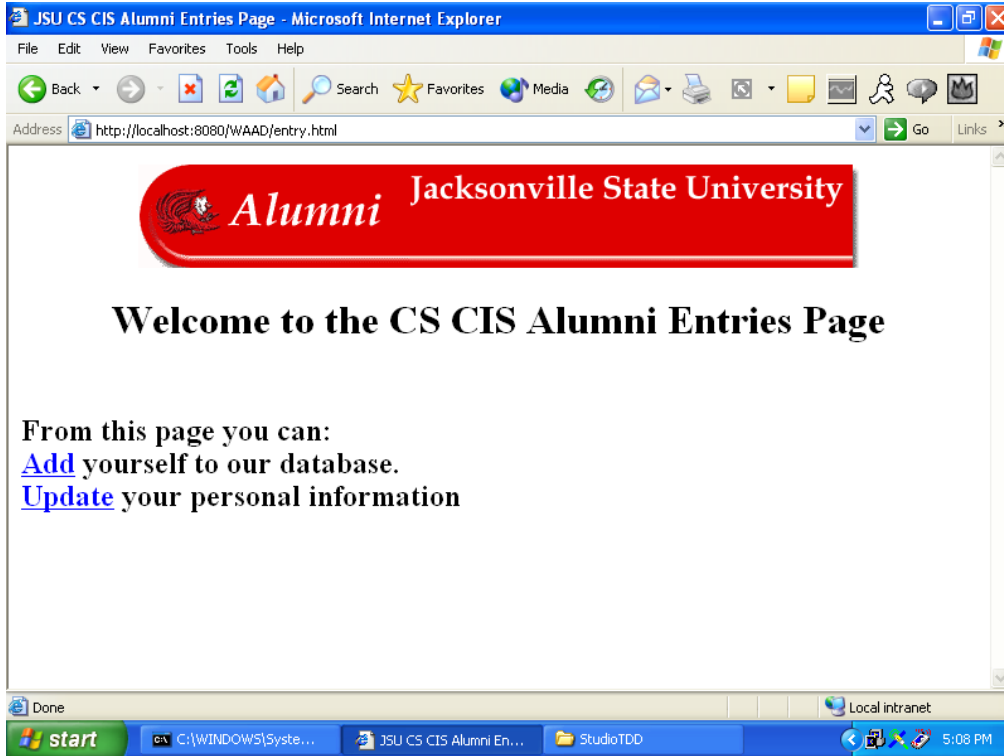


Figure 10 Entries page

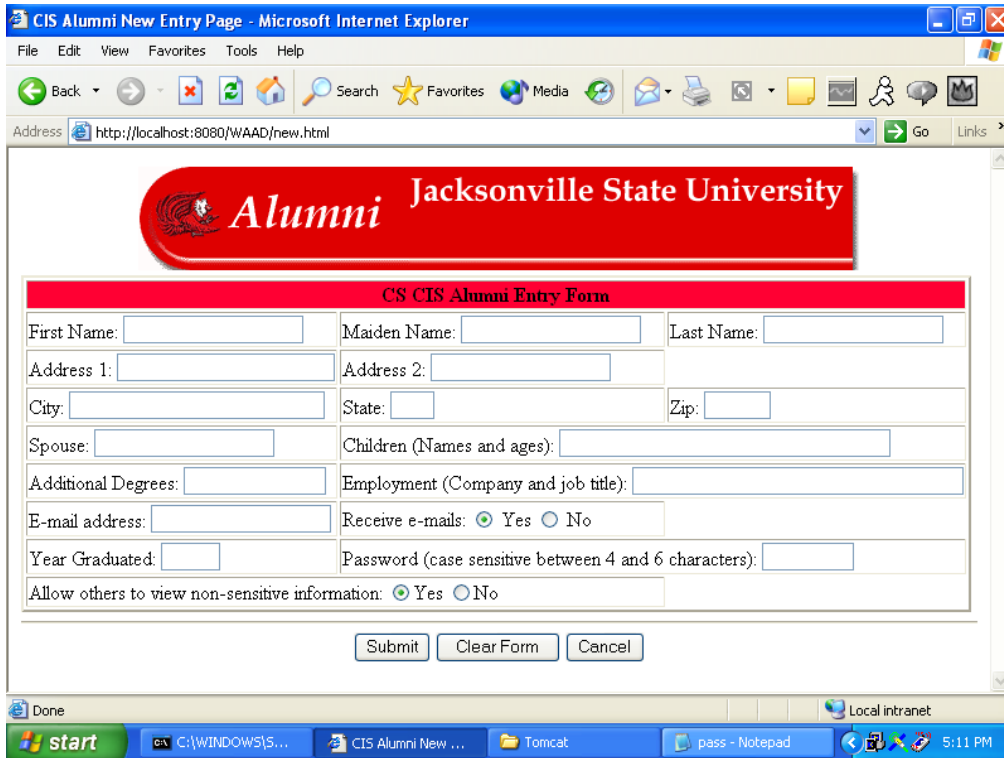


Figure 11 New Alum form page

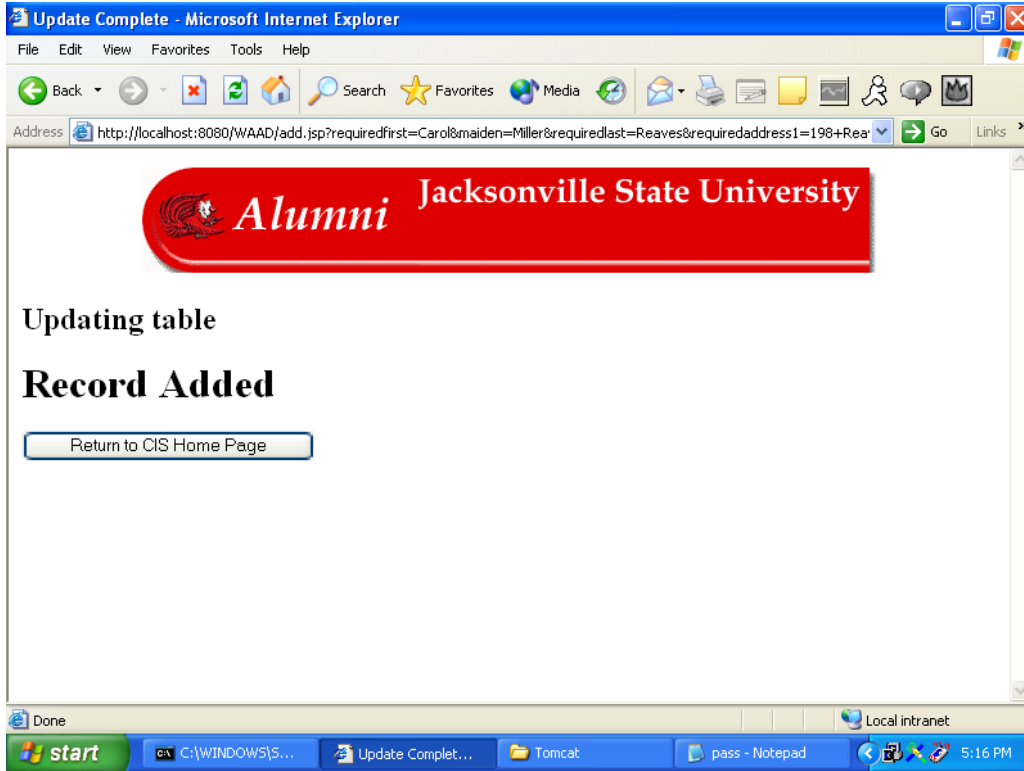


Figure 12 Recorded added page

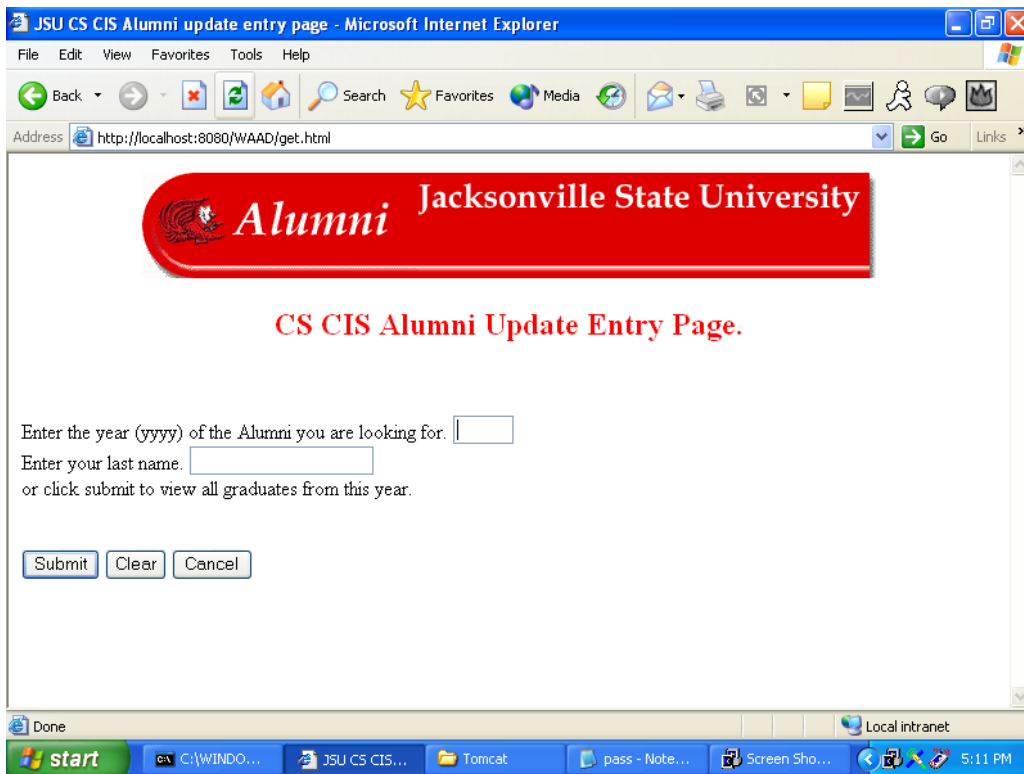


Figure 13 Get year page



Figure 14 Get Alum page

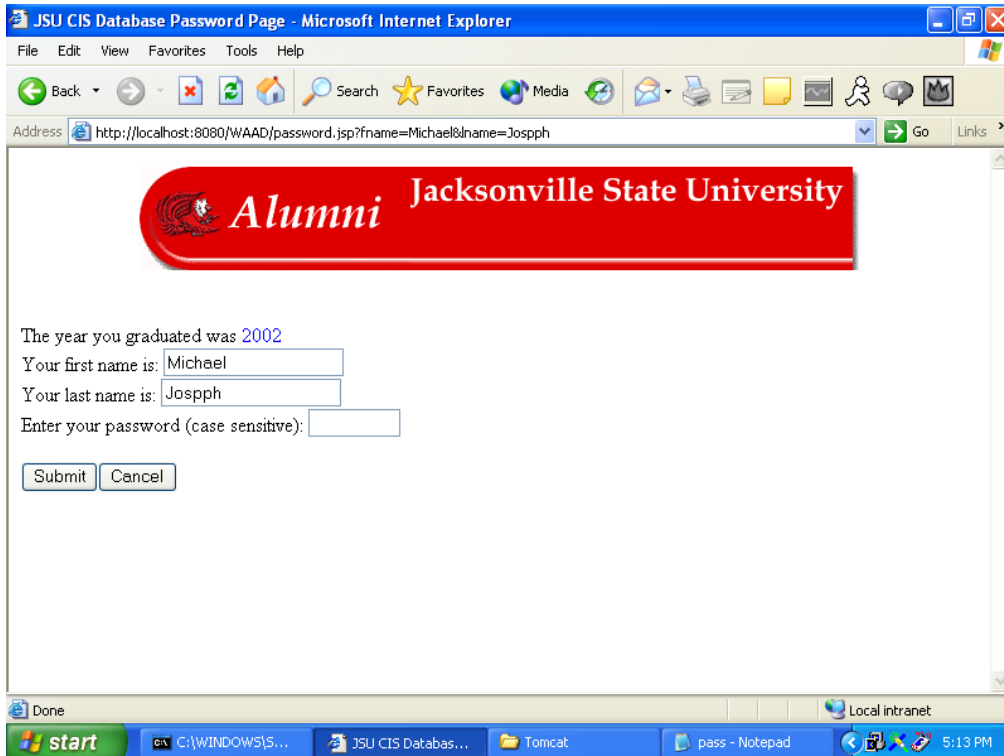


Figure 15 Get password page



Figure 16 Data retrieved page

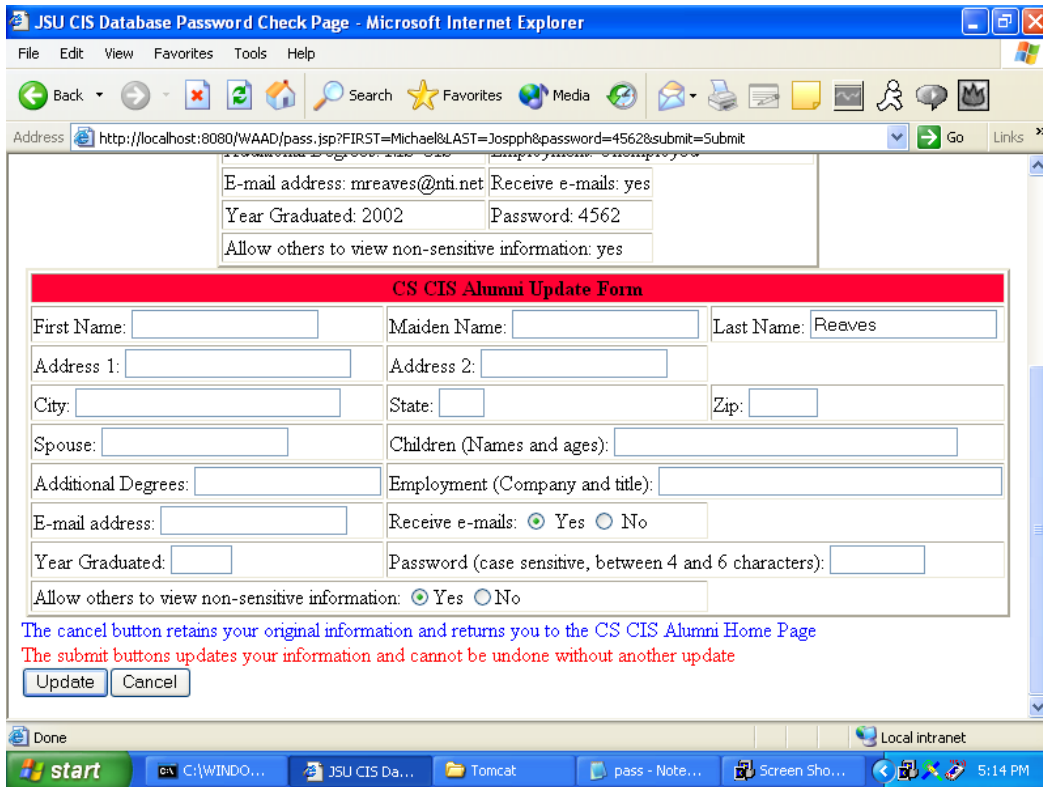


Figure 17 Data to update page

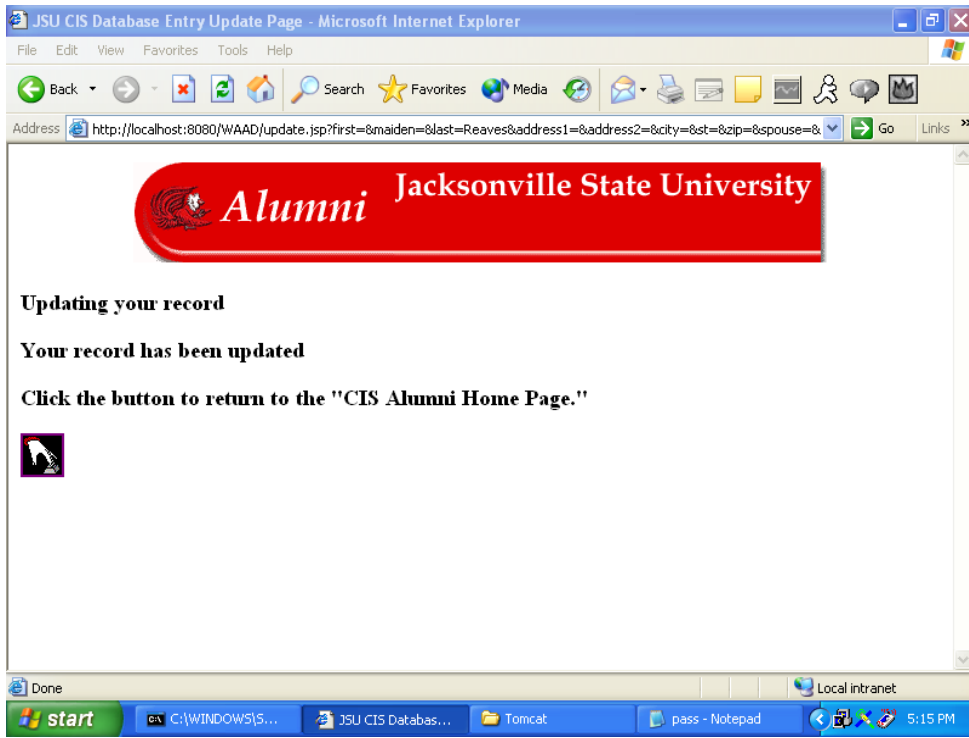


Figure 18 Record updated page

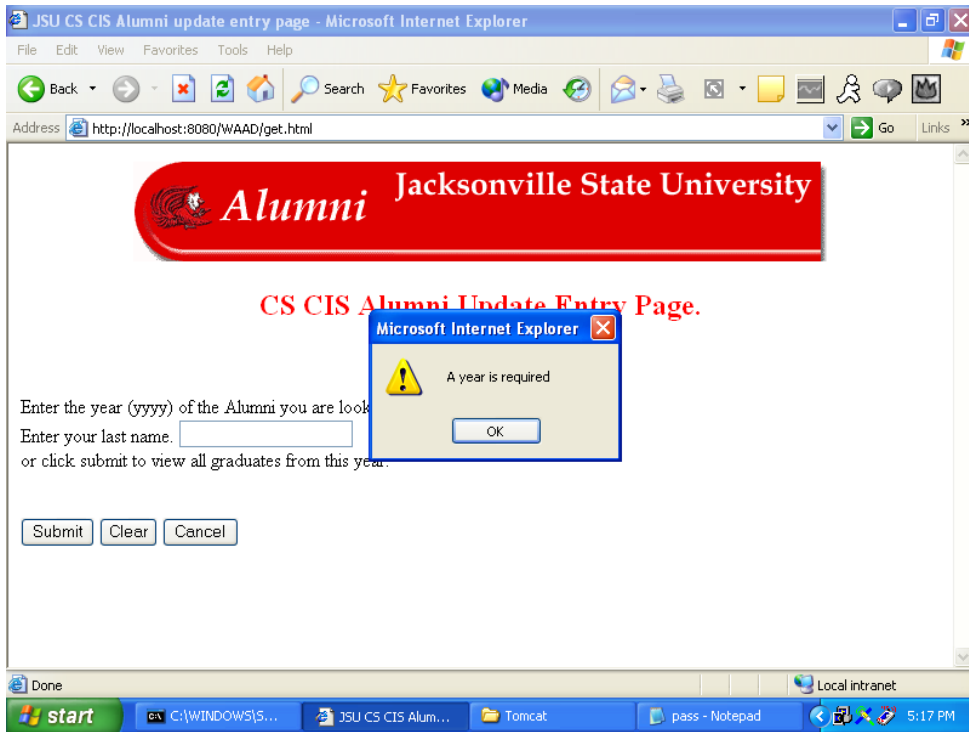


Figure 19 No year alert

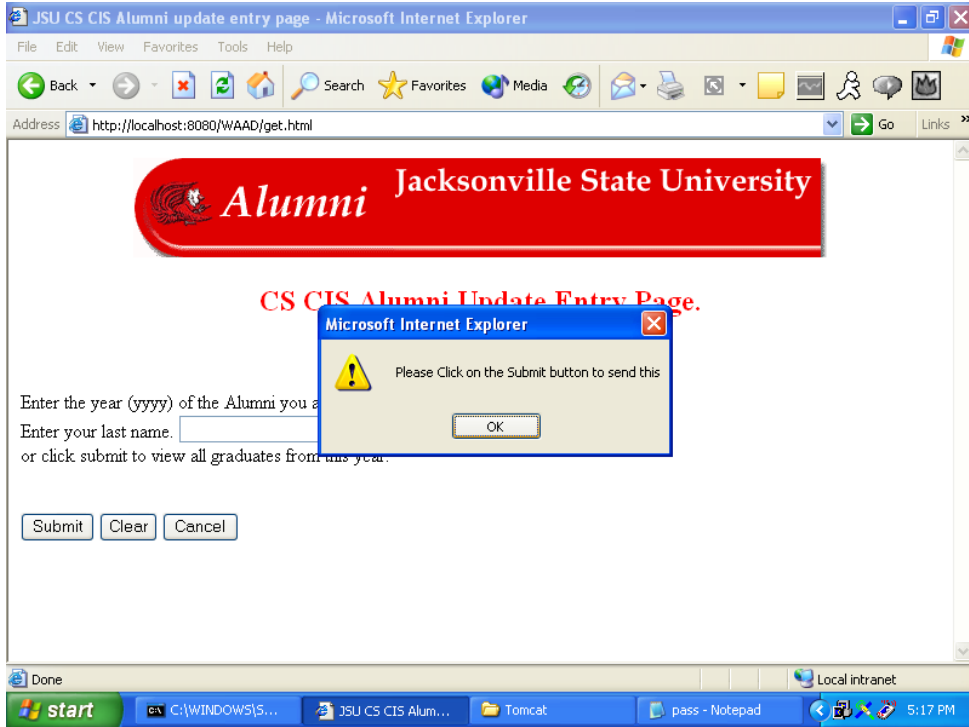


Figure 20 Return used instead of Submit

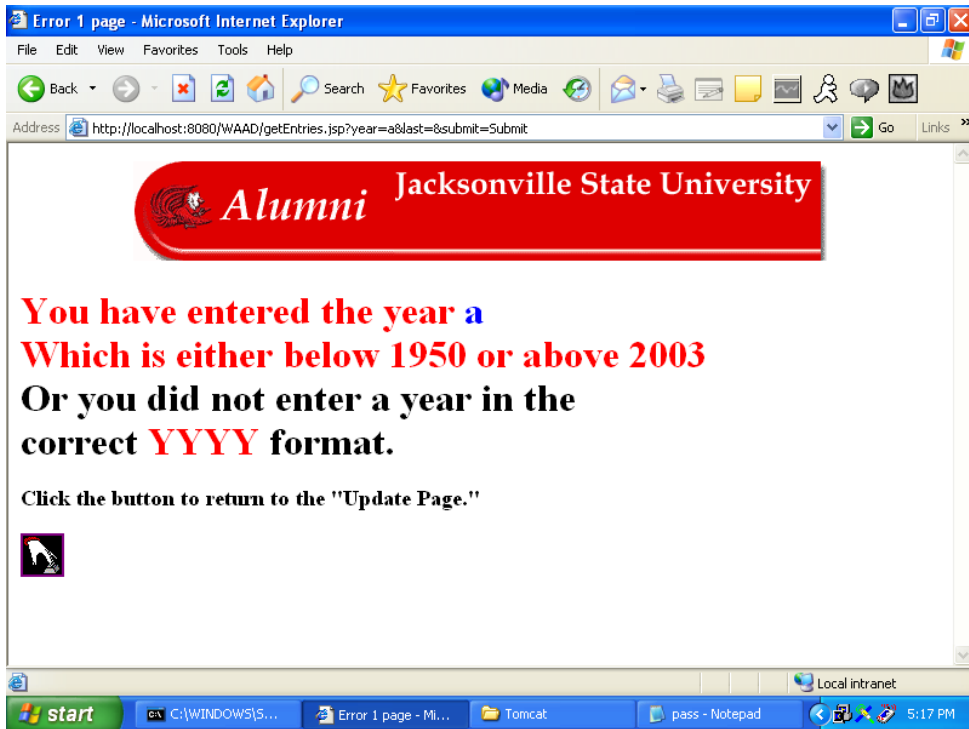


Figure 21 Incorrect year page



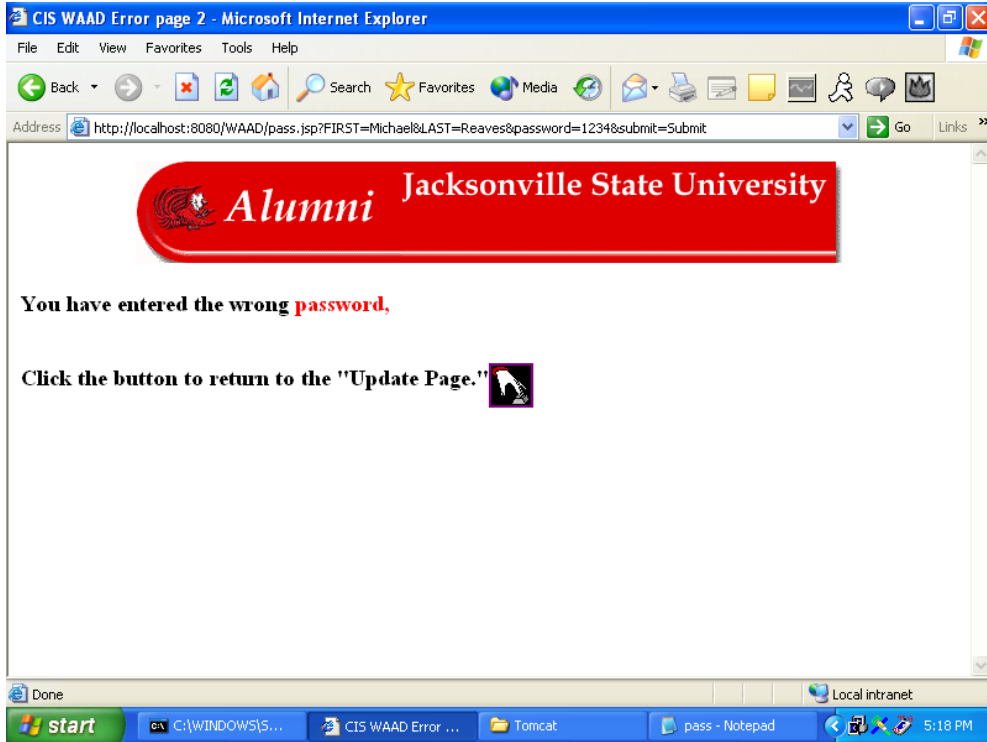


Figure 22 Incorrect password page

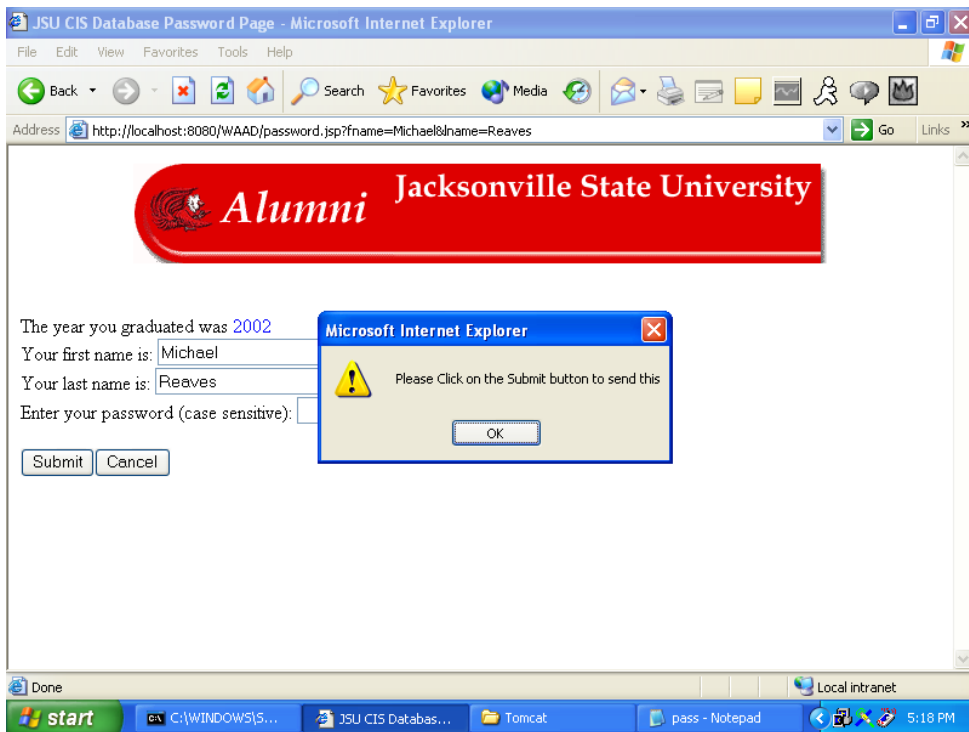


Figure 23 Return used instead of Submit

## **7.0. Help system design**

At this time there is no help system needed or planned.

## 8.0. Index

Administrator, 11  
Attributes, 5, 6, 7, 9  
Audience, 1  
Borland Database Engine, 1  
Configuration Item, 1  
Customer, 5, 6  
Database, 1, 2, 4, 6, 7, 8, 9, 10, 11  
Function, 2  
Institute of Electrical & Electronic Engineers, 1, 2  
Quality Assurance, 2  
Resources, 5, 6, 7  
Server, 1, 4, 5, 6, 7, 8, 9, 10  
Software Configuration Management Plan, 2  
Software Design Document, 1, 2  
Software Engineering Institute, 2  
Software Project Management Plan, 2  
Software Quality Assurance Plan, 2  
Software Requirement Document, 2, 3  
System, 3, 4, 5, 12, 23  
Use Case, 12